



ONE HOUSE MANY NATIONS: POLICY, PRACTICE AND PRACTICALITIES



Dr. Alex Wilson, Opaskwayak Cree Nation
Professor, Department of Educational Foundations and the Academic Director of
the Aboriginal Education Research Centre, University of Saskatchewan.

alex.wilson@usask.ca



SUSTAINING LIFE

Informed practice and practicalities of everyday life by
“Natural Law” and sustainability.

Working in relation to the land, sustaining for future
generations.

Contextual , fluid and accessible through language

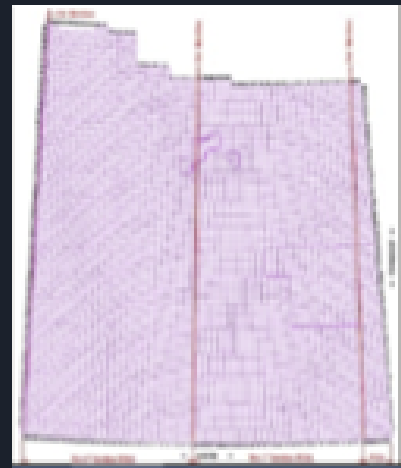




The Canadian Well # Grid...
elegant, logical,
easy to understand.

A 3D map of Canada showing the Well # Grid overlay. The map is color-coded by province/territory. The grid is shown as a 3D perspective view, highlighting its structure and how it fits the Canadian landmass.

drillinginfo
better, faster decisions





epistemicide- severing of
land based knowledge

Old growth boreal



Shift from highly **contextual** land-based way of being to a **definitive** system entrenched and enforced through laws, policies and everyday practices

NAME WILSON, CHARLIE

Married
Single
Widower

Age

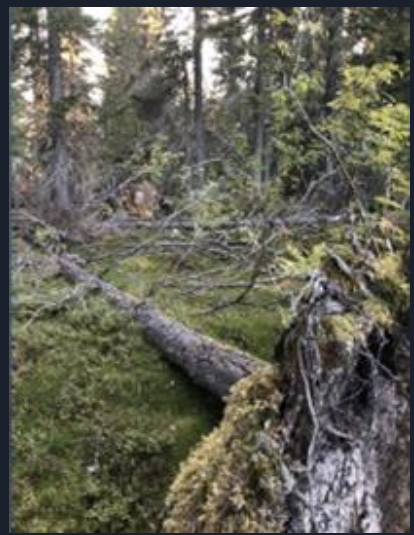
Year

Year	Area	Zone	Quota	Catch	H Hd
1945	S'Berry	Cent. D	260	260	
1946	Reader	Raven	225	225	
1944	Kelsey	Kelsey	300	300	
1947	Saskaran	Crane	230	230	
1948	Kelsey	Kelsey	180	180	
1949	N. S'Berry	0	200	200	
1951	N.S'Berry	(0)	125	125	
1952	S.Mawdesley	Deer	175	175	
1953	N.S'Berry	L	350	350	
1954	Kelsey	L	450	450	
				182	
1955	N.S'berry	0	300	300	
				300	
1956	N.S'berry	L	450	450	
				90	
1957	Kelsey	Island	375	215	





Photo V. Johns





CONTINUITY & RETURN TO LAND-BASED CONTEXT

OCN MAPPING PROJECT

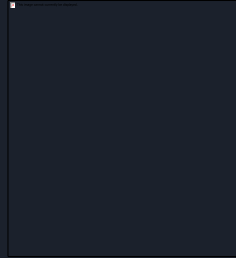
Working alongside students of the University of Manitoba Faculty of Architecture Indigenous Design Studio.



OHMN BUILDS

MUSKRAT HUT

MAKING THE SHIFT





MOVING FORWARD

How can we further reinforce a land-based (contextual) sustainable focus?

How can we change our policies, practices and practicalities?